

ANAJAÚ – 7 days

Combo of the routes Anavilhanas + Jaú National Park complete

1) Introduction:

With a wide range of exposure to native culture and wildlife attractions, this tour offers climbing the giant trees, swimming with the pink dolphins, visiting the Tuiuka Indians, and navigation through black and muddy water ecosystems from Rio Solimões para o Parque Nacional de Anavilhanas, passando pelo Arquipélago de Anavilhanas, no Rio Negro. At its most distant point, we will know the Jau River, where the largest fresh water forest park in the world still guards enigmas to be revealed. Because its relatively complicated access, its paths, waterfalls, and creeks are not heavily explored by tourists. Monkeys, sloths, dolphins, lowland pacas and birds can be observed on jungle nights, or in the river, close to sunset time. During the dry season, the giant otters are the attraction. Riverside communities with genuine northern Brazilian culture, give the human touch to a region where nature still runs the show. The park's water system is composed by 3 big rivers (Unini River on the north, Carabinani by the south and Jaú on the center) and an infinity of small streams of dark water. These rivers present a high water volume variation during the year. The forests found on the banks of the rivers are called Igapó Forests and are flooded for a period of 6-8 months during the year. The dry forests are known as Firm Land Forests. This is the typical humid tropical forest, with trees that reach over 35 meters high, like the Samaúma. Its diversity represents 200 species per hectare.



Peculiarities of the Region

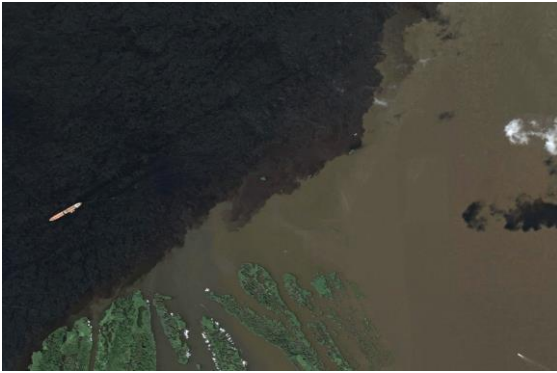
At the lower Rio Negro, is a region blessed by nature and protected by ICMBio. Behaving National Parks, State, Extractive Reserves and Sustainable Development Reserves. Unlike other regions of the Amazon, the Rio Negro has almost no mosquitoes due to the natural insecticide found in its waters. Furthermore, this is the Amazon's most wild and preserved portion.

Recommended

For those looking for adventure, leisure, fun and greater contact with wildlife.

2) Day-by-day - 7 days

Day 1: Manaus / Rio Negro / Rio Solimões



Aerial view of the meeting of the waters

- Board at 9 a.m. at the Hotel Tropical Pier in Manaus.
- Amazonian briefing: quick explanation on the animal life, plant life, river basins, local customs, study of the route maps, **handout of the Ecotourism Booklet for Anavilhanas Archipelago and of the custom maps** in pdf format.
- Arrival at Lago Janauary, a rich Amazon ecosystem full of birds, reptiles, exotic plants and giant trees, fed by the waters of the Rio Solimões, abundant in living and organic nutrients.
- Anchorage for canoe ride nearby.
- Probable sighting of **Tucuxi River Dolphins** (Sotalia

Fluviatilis), **Pink River Dolphin** (Inia Geoffrensis) and birds of the region, **like Cocoi Heron** (Ardea Cocoi), **Great Egret** (Casmerodius Albus), **Blue-Yellow Macaw** (Ara Ararauna), **Festive Parrot** (Amazona Festiva), **Rufescent Tiger-herons** (Tigrisoma Lineatum), **Yellow-rumped Caciques** (Cacicus Cela), **Crested Oropendola** (Psarocolius Decumanus) and **Jacamars** (Galbulidae), among other

- We return navigating the Paran  do Paracuuba to the Rio Solim es. Lunch onboard.
- We arrive at the **meeting of the rivers**, where the Rio Negro meets Solim es and run parallel for more than 9 miles.
- Then it's time to see **Pirarucu**, the largest scaled fish in the world, also known as the lion of the Amazon.
- Navigate towards the Anavilhanas Archipelago, up the Rio Negro.
- Dinner on board & night navigation.



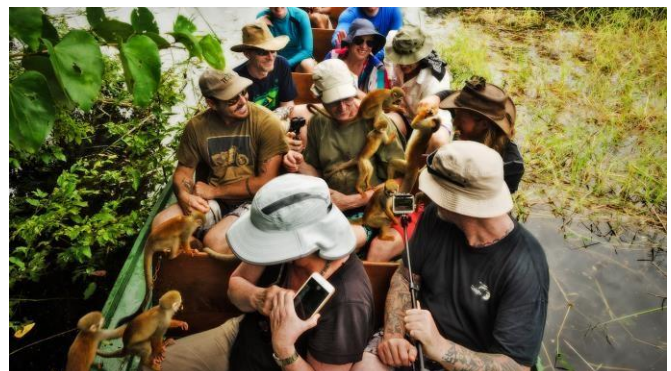
Day 2: Rio Negro / Rio Arian  / Acajatuba Lake



- Sunrise at Tup 's beach, where there is a **settlement of natives** from the Alto Rio Negro.
- After breakfast onboard, we descend to the village where we will have the opportunity to see a presentation of their traditional and well preserved customs, dance, as well as little history and crafts. After the presentation, there will be a cultural exchange in their native languages of **Tuiuka** and **Tukano**. Lunch on board.
- Navigate up the Rio Arian , a beautiful black water course with lots of vegetation and interesting attractions like

monkey and sloth interaction.

- Visit to **Samauma giant tree**, with optional Tree Climbing (not included).
- After dinner, focus of alligators and other nocturnal animals..
- After the Arian , we set course to the Lago Acajatuba, seeing **the famous pink river dolphin** in a floating house region.
- Food/diving/optional interaction.



Day 3: Anavilhanas Archipelago

- The day begins in the heart of the second largest river archipelago in the world, to the sound of the jungle "Igapos".
- After breakfast on board, **aquatic trails** such as paranás, igapós, lakes and islands.
- Under the shadow of Macacarecuia, **swim with inflatable tubes** in the delicious waters of the Rio Negro. Moments of leisure and contemplation.
- Fishing for piranhas in 'Igarapé' of Jaraqui.
- Return to the boat, lunch on board.
- Arrival at **Santo Antonio community**, visit manioc house, regional fruit orchard, exotic pets.
- Trekking 2 hours in a wonderful forest for viewing the fauna and flora of the Mainland.
- Next, we sail to the heart of Anavilhanas National Park to perform a night aquatic trail full of wildlife.



Swimming with Pink Dolphins



Lakes from Anavilhanas Archipelago

Day 4: Anavilhanas / Madadá



Saloon from Madada Caves

- We start the day at Madadá.
- 3 hour hike (round trip) through virgin forest to the Madadá Caves.
- Upon return, visitation to native ranch, visitation to an orchard with fruits of the season.
- Swimming with floats at Negro River. Lunch on board.
- Returning to the boat, we set sail to the Rio Negro State Park area.
- Piranha fishing before sunset.
- We fix anchor at beach (dry) or igarapé (flood).
- Dinner, bonfire (in dry season), night focus (in flood season), native folklore storytelling.



Madada lookout bungalow, for an overnight in the jungle (optional included)

Day 5: Jau National Park

- We start the day at Praia do Sono (Sleepy Beach).
- Set sail to the IBAMA base, on the Park's entrance
- Navigation by the **Jaú River**, a river of mirror-like waters, with probable sighting of water mammals and birds.
- **Wet season:** anchorage and speedboat ride through the Park's creeks, in an attempt to find the packs of **Giant Otters**.



Dry Season: Trip through Pauini River, exploring this tributary filled with boulders and waterfalls.

- Return to boat, navigation to the Aturiá community. Canoe night ride in the river, **with light-spotting of alligators** and nocturnal animals.



Pauini waterfalls

Day 6: Jaú National Park



- Anchorage at the **Aturiá community**. Visit to the community, and exchange with the locals, practice of local customs, orchard with fruits of the season, playing with the children, soccer, handicraft, river swim, etc.
- Visiting a **giant tree** around the community, a very old lady from the ancient forest.
- **Aquatic trail with regional canoes**, seeking for Bico-h Monkeys and other animals.
- Lunch on board.
- Return to the IBAMA base, exit from the Park.

Day 7: Novo Airão / Manaus

- The day rises in the forest, the sound of birds.
- After a day aquatic trail, return from the archipelago to Novo Airão city.
- City-tour in Novo Airão: crafts, artisan workshop and local attractions.
- Farewell lunch on "Flor do Luar", a floating restaurant at Anavilhanas National Park.
- Relax'n'swimm on Rio Negro.
- Transfer Novo Airão - Manaus, scheduled for 15:30 arrival.



Tapiri, the native amazon house.

Note: For script preservation purposes, some place names are fictitious. The attractions remain trustworthy.

3) General Characteristics

The purpose of the regional style of the Expedition boats is to provide our clients the feeling of traveling in line boats, like the local people do, but with more comfort, safety, and onboard services. Wooden boats, ranging from 40 to 80 feet, with a solarium, covered leisure area, tables and chairs, cabins, space for hammocks, electrical power, kitchen, lunch table, washrooms, mineral water, beverages. Also: Motor rafts and canoes, according with the excursion needs.

Jacaré-Açu boat

- 3 floor Regional-Premium, 72 ft;
- Decorated cabins with air-conditioning, private bathroom, bed and bath set.

Jacaré-Tinga boat

- 2 floor Regional-luxe, 53 ft;
- Decorated cabins with air-conditioning, private bathroom, bed and bath set.



Jacaré-Açu boat

Comfort items included on the boats:



- 110/220V Energy 24/7 in all cabins;
- Bank of Batteries for conversion 220V-110V, offering clean and noise-free energy when anchored;
- GPS, Sonar, Radar, Radio, Nautical Maps, Iridium cell-phone;
- First-Aid kit, pharmacy, experienced and certified team;
- Complete kitchen with oven, freezer, refrigerator, etc;
- Equipment for overnight in the jungle, Powerful flashlight for alligators spotting and Walkie-talkie radios for the trail;
- Binoculars for bird watching;
- Large photographic maps;
- Multiples leisure areas: Solarium, Living Room, Bar,

Observatory and Leisure decks;

- Card games, dominoes, chess and backgammon;
- Thematic library with maps and photography books;
- Inflatable rafts and accessories for swimming in the river and waterfalls; Fishing rods;
- Leisure area with chairs and barbecue grill;
- Boats inspected/approved and fumigated;
- Optional equipment for tree climbing.



Jacaré-Tinga boat



For groups up to 7 passengers, the boat used is Jacaré-Tinga. For groups over 8 passengers the boat used is Jacaré-Açu.

Crew

Commander, expedition chief guide, native guide, Boatman, cuisine chef, maid, waiter.



Alongside a professional crew, you'll be able to try rich experiences

Meals



Full Board, including:

- 3 daily meals + snacks;
- Juices, beers, soft drinks and mineral water at will;
- Fruit "caipirinhas" (traditional Brazilian drink);

Customized menu options (please pre-advise):

- Regional;
- International;
- Vegetarian;
- Low fat.

All food is washed and cooked with mineral water

4) Prices and Commercial Conditions

Prices includes:

- Bilingual guide
- Individual travel insurance policy
- Rides and attractions from third parties
- Photographic map with expedition itinerary, in PDF
- Charts and graphics about the Amazon, in PDF
- Documentary "A Próxima Refeição" ("The Next Meal") produced by TV Cultura and shot in the region, on pen-drive.



Toucan in Anavilhanas

Note: We request that the client bring a pen drive for the files.

Prices do not include airfare.

Commercial Conditions

Payment of 50% deposit // 50% 30 days before embarkation



In accordance with the 161 Embratur Deliberation Act (August 9, 1985), cancellation of your reservation 31 or more days prior to boarding will result in 10% of the total value being retained due to operational expenses. In the case that the trip is canceled 21 to 30 days prior to boarding, 20% of the total value will be retained. In the case that the trip is canceled 20 to 11 days prior to boarding, 50% of the total value will be retained. If the trip is canceled within 10 days prior to boarding, we will retain 80% of the total value of the package.



We point out that our prices are determined in accordance with the fair value policy, and are the sum of costs of the Amazon River transport logistics, fuel expenses, maintenance program, specialized crew, top quality food, ride, attractions and the whole infra-structure necessary for a peaceful and safe trip. Furthermore, we offer our clients the genuine feel that only mobile tourism can offer, with spontaneous moments during the trip, both man-made and Nature-made.

The company is protected from the right to make modifications to the itinerary presented according to river level, navigation conditions or climatic conditions that may interfere with the proposed activity.

